



Installation Instructions

Application Fits

2011+ Honda Odyssey

X7253 & X7254

1.25" & 2" EcoHitch Stealth

350 lbs. Tongue Weight/ 3,500 lbs. Towing Weight

Torklift Central
315 Central Ave N
Kent, WA 98032
253-854-1832

www.torkliftcentral.com
support@tlcentral.com

Stay Connected



torkliftcentral



torkliftcentral



tlcentral



torklift central



torklift central



Bolt Kit Weight: 836g +/-

Hardware Included

QTY Fastener

- 4 3/8" Flat Washer
- 4 3/8" Lock Washer
- 4 3/8"-16 Serrated Flange Nuts
- 4 3/8"-16x1" Hex Cap Screw
- 12 1/2" Flat Washer
- 6 1/2" Lock Washer
- 2 1/2" Internal Tooth Lock Washer

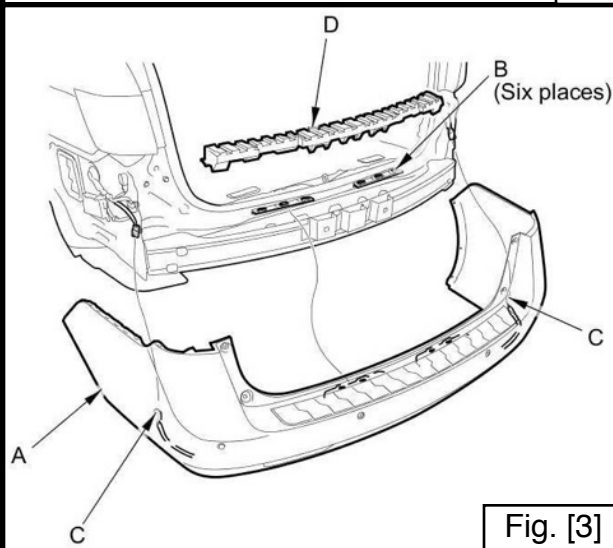
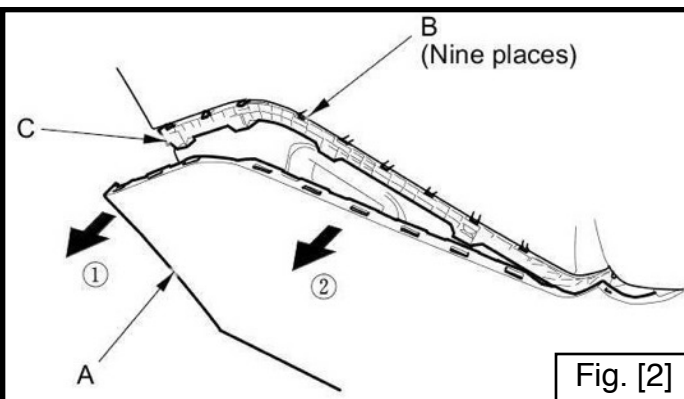
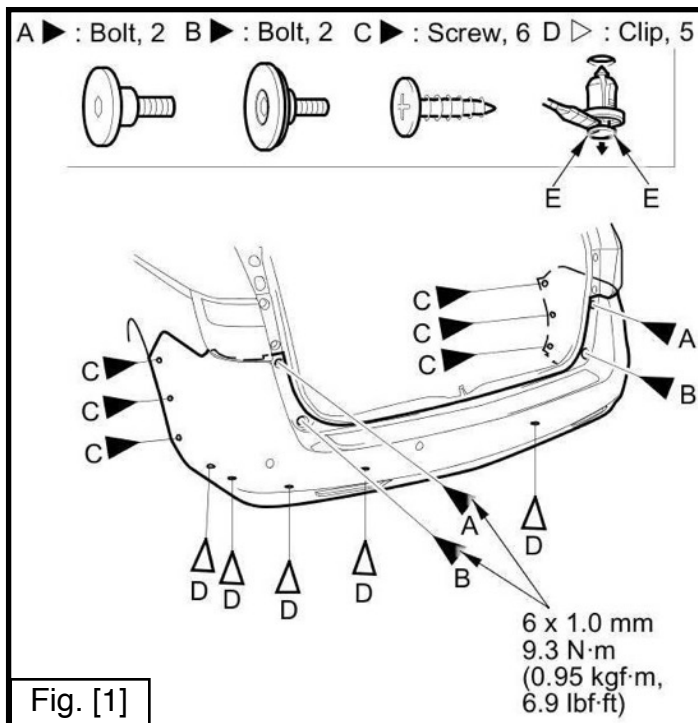
QTY Fastener

- 2 1/2"-13 Hex Nut
- 2 1/2"-13x2" Hex Cap Screw
- 2 1/2"Dx7/8"x2" Plate Washer
- 1 1/2" Bolt Fisher
- 4 M12-1.25x40mm Hex Cap Screw
- 2 Bumper Core Strap

READ THESE INSTRUCTIONS THOROUGHLY AND ACCOUNT FOR ALL HARDWARE LISTED BEFORE BEGINNING INSTALLATION!

Step 1. Raise vehicle on suitable jack stands, ramps, or hoist.

Step 2. Remove the various fasteners from the bumper fascia as shown in Figure [1]. To remove (D) fastener, pop up the center of the fastener with a flathead screwdriver and then remove the entire unit. Starting at the driver side wheel well, unsnap the bumper away from the vehicle working way to the rear. Move to the passenger side and repeat this process once you have reached the rear of the vehicle. Unsnap the bumper rearward at the back end to completely remove. Have an assistant hold the bumper to avoid damage. See Figure [1], [2], & [3].



Step 3. Lower the exhaust by lubricating the rubber exhaust bung with WD-40 or equivalent. Do not let the exhaust hang freely! Support with a stand, wood block, or wire. See Figure [4].



Fig. [3]

Step 4. Take (1) 1/2"-13 x 2" bolt, (1) 1/2" internal tooth lock washer, and (1) 1/2"D 7/8" x 2" plate washer and attach them to the 1/2" bolt fisher. Feed the head of the 1/2" bolt into Hole A of the frame rail shown in Figure [4] followed by the 1/2" star lock washer and plate washer. Once the components are fed into the frame rail, pull the fish wire to bring all hardware components into position. Repeat on opposite side of frame. See Figures [4]-[7].

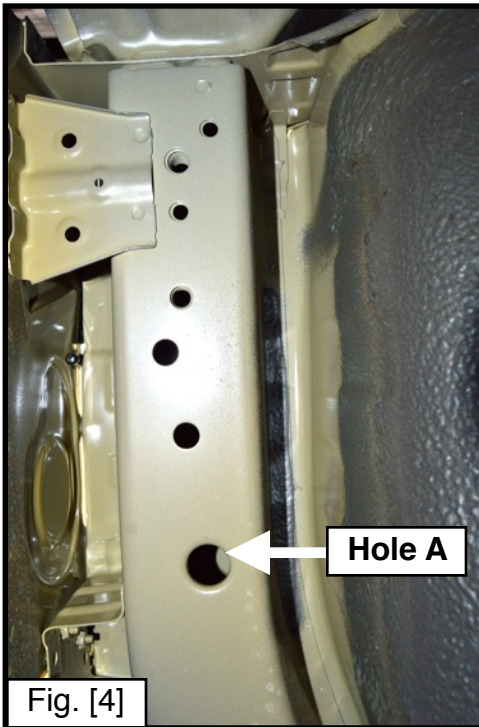


Fig. [4]



Fig. [5]



Fig. [6]

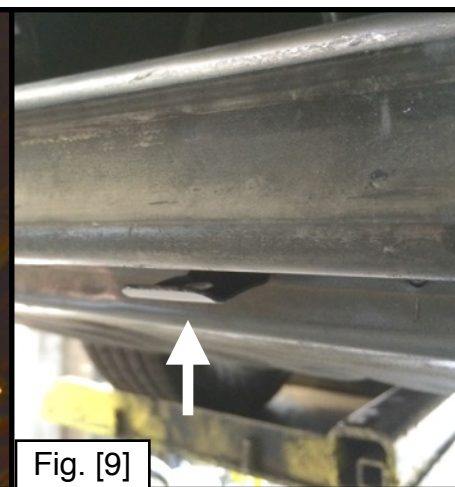
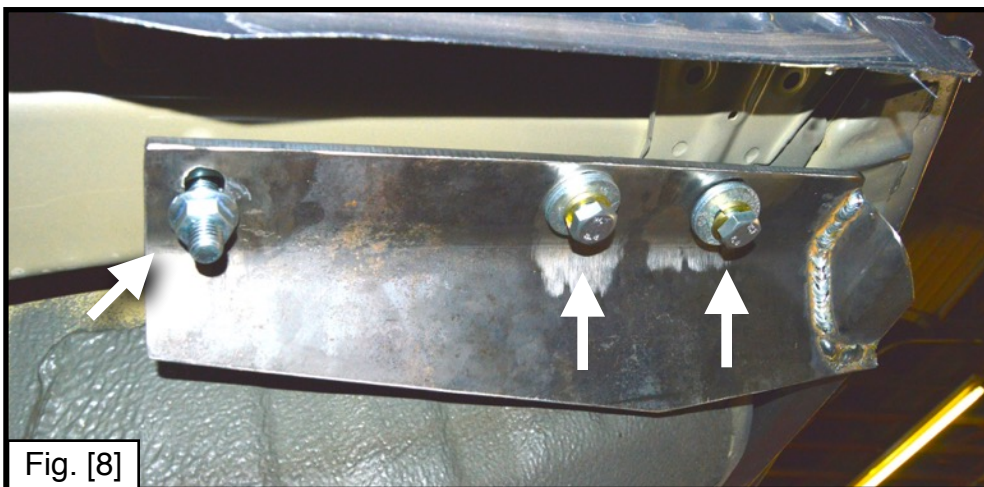


Fig. [7]

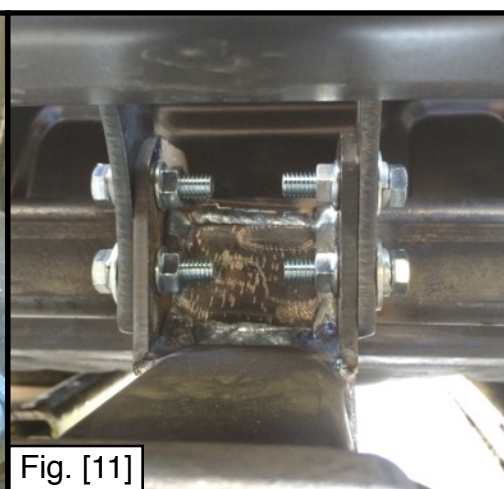
Step 5. Raise the hitch into position on the frame being careful not to push the 1/2" bolts back into the frame. Once the frame rail weld nuts in the frame rails are aligned with the holes in the hitch frame plates, thread (1) M12-1.25 x 40mm bolt, (1) 1/2" lock washer, and (2) 1/2" flat washers into each of the weld nuts. Secure the 1/2" bolts with (1) 1/2" serrated flange nut.

Torque all 1/2" hardware to 70 ft-lbs and all M12 bolts to 70 ft-lbs.

NOTE: On some Odyssey vehicles it may be necessary to bend the bumper clip tabs down a little to allow hitch to clear and be installed. See Figure [9].



Step 6. Install the bumper straps with the tabs bent outwards in the impact bar opening and placed on the outside of the hitch center. Place (1) 3/8"-16 x 1" bolt, (1) 3/8" lock washer, and (1) 3/8" flat washer through each of the holes on the outside of the strap and into the hitch and secure with (1) 3/8"-16 serrated nut. Torque all 3/8" hardware to 25 ft-lbs. See Figure [10] & [11].



Step 7. Mark and trim a 4" x 3.5" section from the center of the bumper fascia to allow the hitch receiver to come through the bumper. Mark and trim a 4" deep section from the exhaust guard on the passenger side of the bumper fascia, following along the creases in the plastic. See Figure [12] & [13].



Fig. [12]

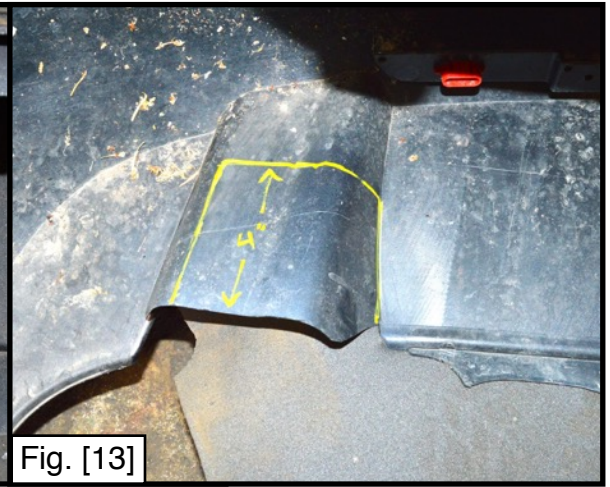


Fig. [13]

Step 8. Reinstall the bumper fascia exhaust by following these steps in reverse starting at Step 3.

NOTE: The plastic fasteners along the hitch cross tube may need to be modified by trimming the tips as shown in Figure [14]. You may also replace them with zip/nylon ties instead.



Fig. [14]

Congratulations on the completed installation of the Honda Odyssey Stealth EcoHitch! It is designed with a lifetime warranty for a lifetime of enjoyment. If you have any questions or suggestions please contact our tech support at support@tlcentral.com or by phone at (253) 854-1832.



WARRANTY/DISCLAIMER INFORMATION

Torklift Central requires proof of purchase for warranty claim registration, with pictures of any defective product before issuing a replacement. Torklift will not accept claims on any product without proof of purchase, which can be faxed, scanned, emailed or mailed to the information provided below. Torklift Central warrants its hitches, custom hitch receivers and accessories (excluding electrical wire harnesses which carry a warranty from their specified manufacturer) from date of purchase against defects in material and workmanship under normal use and service for the ownership life of the original consumer purchaser. Torklift Central will replace free of charge any part that proves defective in material or workmanship when presented to Torklift Central, transportation charges prepaid by purchaser, at the address below. **This warranty is limited to defective parts replacement only. Labor charges and/or damage incurred in installation or replacement, as well as incidental and consequential damages connected therewith are excluded.** This warranty does not include normal wear and tear or the finish and paint. Rusting, cracking or peeling of the finish is also excluded. Some states do not allow the exclusion or limitation of incidental or consequential damages, so the above limitation or exclusion may not apply to you. Any damage to Torklift Central products as a result of misuse, abuse, neglect, accident, improper installation or any use violative of instructions furnished by Torklift Central will void the warranty. This warranty gives you specific legal rights and you may also have rights, which vary from state to state. With warranty service, you may be able to go to a small claims court, a state court or a federal district court.

Although Torklift Central trailer hitches are both tested and rated for towing within the specific capacity label found on each trailer hitch. Torklift Central assumes no liability for vehicle manufacturers warranty due to the use of a Torklift Central trailer hitch being used for towing behind any vehicle or using the trailer hitch in a manner that it was not designed for. Although this specific trailer hitch has a load rating, which includes trailer tongue weight, and a trailer weight carrying capacity, Torklift Central is not responsible for the voiding of any warranty on any vehicle due to factory towing limitations. All vehicle warranties are the sole property and responsibility of the owner of the vehicle that the Torklift Central trailer hitch is installed upon. Torklift Central does not endorse towing behind any vehicle if the vehicles manufacturer states that towing is not recommended. Check your vehicle's owner's manual for the proper tow rating of your vehicle.

ADDRESS: 315 Central Ave N. Kent, WA 98032

WARNING Your vehicle may have a lower tow rating than this trailer hitch. If your vehicle's tow rating is less than the rated towing capacity on your Torklift Central trailer hitch, your trailer hitch capacity is limited to your vehicle's factory rated towing capacity.

FOR EXAMPLE: the label on your Torklift Central trailer hitch states it's capacity is rated for 500 pounds tongue weight and 5,000 pounds towing weight. However your vehicle's factory rated towing capacity is limited to only 350 pounds tongue weight and 3,500 pounds towing weight. In this example your maximum towing capacity of your Torklift Central trailer hitch is limited to 350 pounds tongue weight and 3,500 pounds towing weight as stated by your vehicle's maximum factory tow rating.

DANGER Never exceed your vehicle's manufacturer's recommended towing capacity which may be a lower rating than this trailer hitch

Unsure of your tow rating? Download our towing app from the app store to find your vehicles tow rating.
www.torkliftcentral.com/app.php